

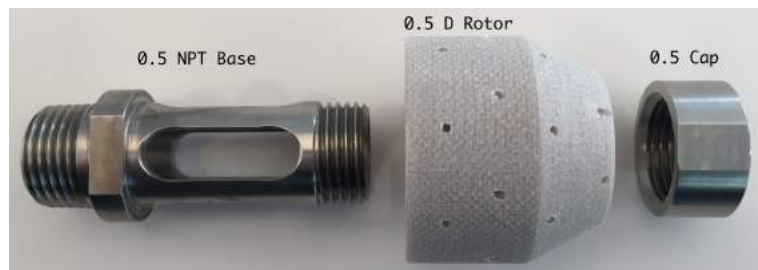


# RC050D Deluge Nozzle

SPECIFICATION SHEET

Rev 1.0 3-18-2016

- 1/2" Deluge Nozzle
- Made of Stainless Steel and Kevlar Composite
- Flows Water or Foam-Water Solution\*
- Mount Vertically or Horizontally
- Weight: 7 oz (200 grams)
- Length: 3 inches (76 mm)
- 1/2 inch NPT Threading



The International Fog Inc. (IFI) Deluge-Tech Nozzles use patented IFI fog and rotor technology designed to control and suppress fires. IFI Deluge-Tech Nozzles are installed on fixed fire protection systems. The nozzles are designed to apply cooling water to exposed vertical and horizontal, curved and irregular shaped surfaces to protect objects from adjacent fires as well as to control or extinguish a fire within a protected hazard area. The Deluge-Tech RC050D Nozzle has a rotor that improves water droplet velocity and distribution, making it a more effective suppression nozzle than conventional deluge nozzles with deflector plates. The water is simultaneously directed at a wide angle, providing a protective water curtain, as well as forward which allows greater reach. The nozzle is used in applications where deluge water spray systems are installed for special hazards protection. The IFI nozzle produces superior protection with a minimum water pressure of 7 psi to a maximum pressure of 175 psi. The nozzle may be oriented in any direction necessary to protect the hazard.

## Applications

Directed water spray providing dedicated coverage to protect specific equipment such as

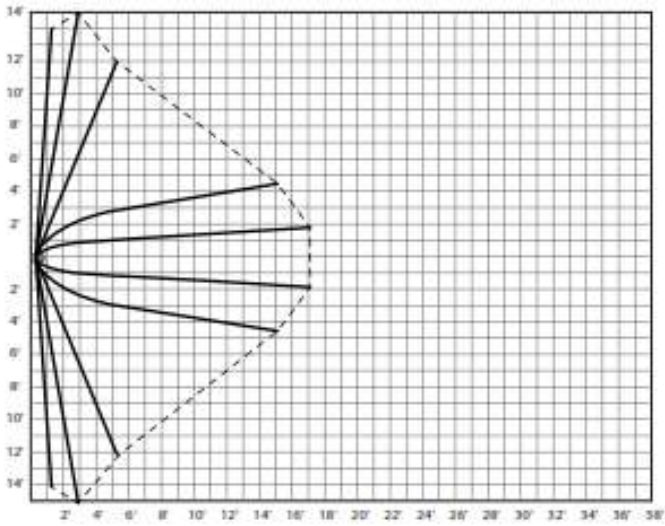
- Spheres, tanks, vessels and wellheads
- Tunnel fire protection
- Off shore drilling rigs
- Transformer fire protection
- Flammable liquid rack storage
- Provides a means to apply foam to extinguish hydrocarbon pool fires

MODEL DESIGNATION	RC050D
Nominal K-Factor	2.5 +/- 0.25
Strainer	Included in assembly
Installation Positions	Horizontal or Vertical (0 to 180 degrees)
Min and Max Working Pressures	7 to 175 PSI
Nominal Spray Angle	170 Degrees
Spray Coverage	The RC050D provides a wide angle spray reaching 24 ft wide and out to 25 ft

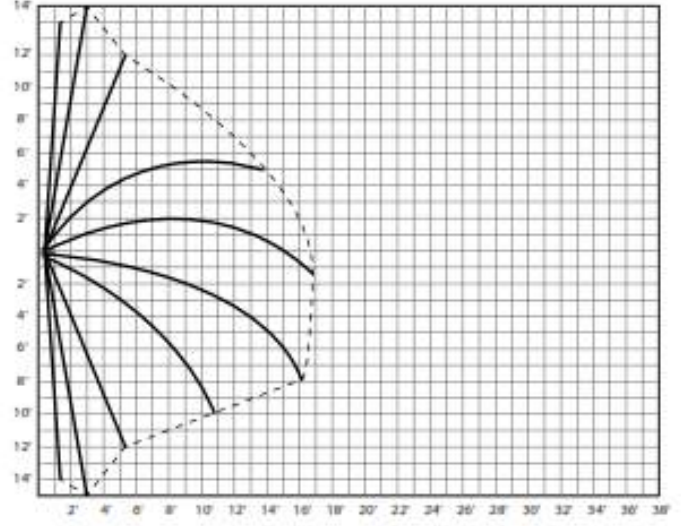
International Fog, Inc  
 6 Ferndale Road  
 Seven Valleys, PA 17360  
 www.internationalfog.com  
 Voice: 1-312-351-5919  
 email: [info@internationalfog.com](mailto:info@internationalfog.com)



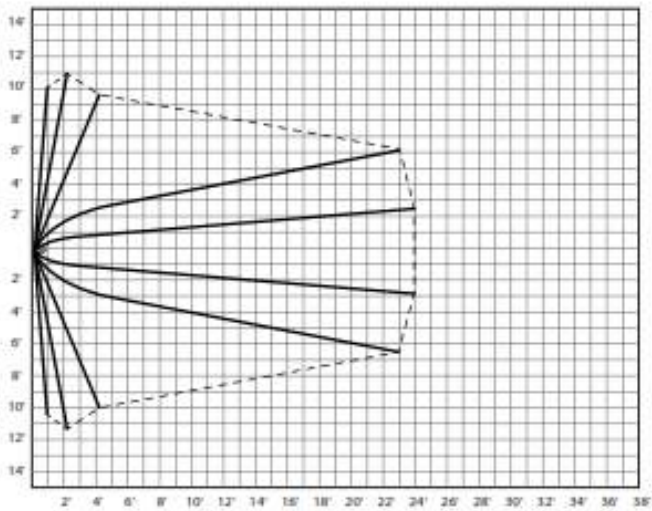
\* - Foam is not FM approved



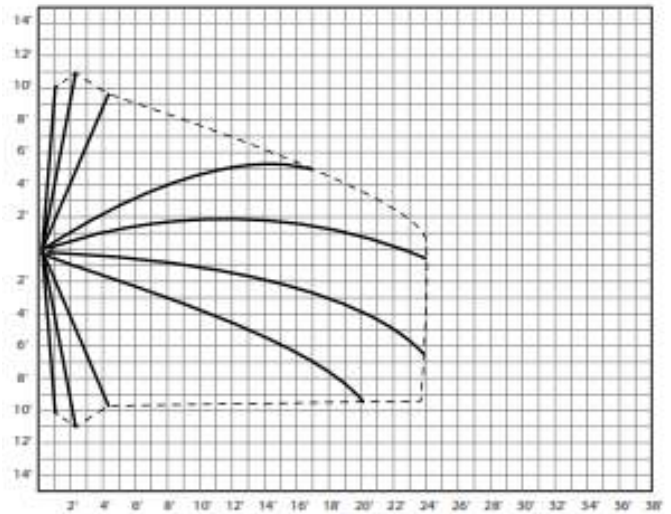
Top View of spray pattern from RC050D Nozzle at 25 psi



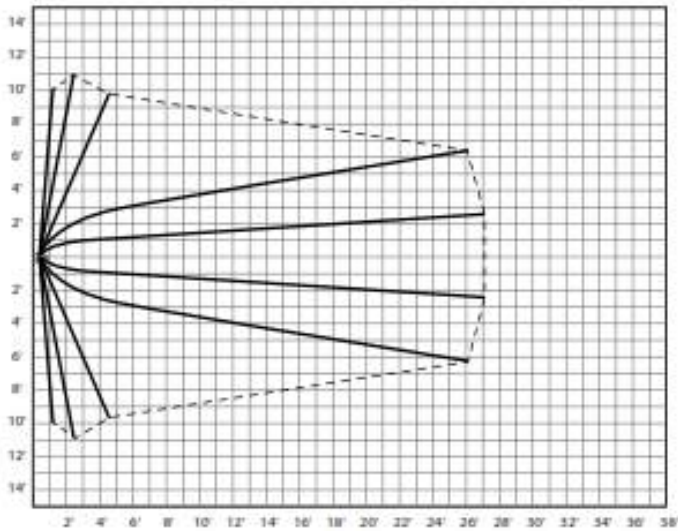
Side View of spray pattern from RC050D Nozzle at 25 psi



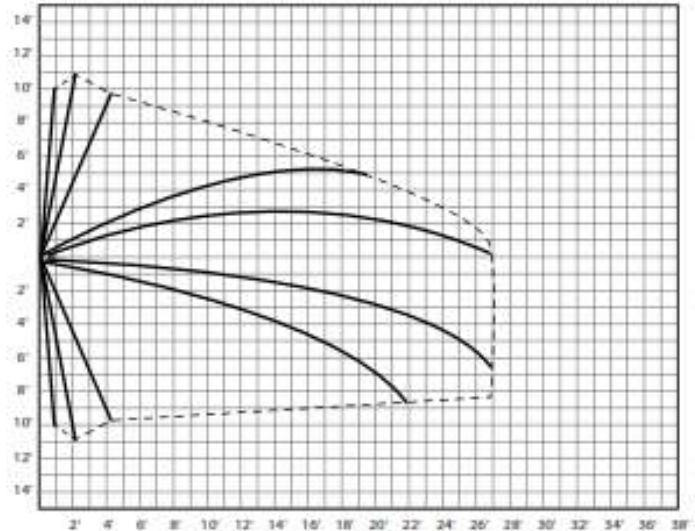
Top View of spray pattern from RC150D Nozzle at 100 psi



Side View of spray pattern from RC050D Nozzle at 100 psi



Top View of spray pattern from RC050D Nozzle at 175psi



Side View of spray pattern from RC050D Nozzle at 175psi

Scale: Each square represents 1 square ft. Dotted line indicates effective width and depth of coverage for the fog pattern.